



SI::LOCKER

Electronic motor-driven smart lock

SI::LOCKER is designed as a battery-operated smart lock with high security standards without need of wiring. The RFID Locker locks provide easy-to-use access control for any types of locker where comfortable and safe locking is desired. This lock is universally used on any types of doors for lockers, safes, cabinets and other applications.

SI::LOCKER – handy, intuitive, universal:

- Intuitive graphic design with LED lights which displays operation status
- Encode RFID cards quickly and easily
- Facilitate easy one-hand locking / unlocking
- SI::LOCKER Manager controlling software appli (e.g. central management, history reports, power manag
- Universal for left and right doors
- Fast and easy installation

SPECIAL ENERGY-SAVING SYSTEM:

- Only motor-driven locker lock worldwide
- Internal battery with long lifetime
- Very quiet and smooth operation

SI::LOCKER can be initialized into three operation modes:

- WELLNESS – a visitor can select any free locker available
- FITNESS – a locker is assigned only to one specified visitor
- FAMILY FITNESS – this mode is extension of Fitness mode. It is possible to release more cards (copies) to one lock in Fitness configuration (e.g. for family members)

ROUNDED VERSION OF SI::LOCKER – SI::LOCKER/R

SI::LOCKER/R has the same function as SI::LOCKER but with smaller rounded front cover

TYPICAL APPLICATION FIELD

- High-security and comfortable locking system
- Access control system
- Cashless payment system



Technical Specification SI::LOCKER

Dimensions	113 × 116 × 46 mm
Operation temperature range	0 °C to +70 °C
Power supply	internal 6 VDC battery (battery pack) 4LR6
Power consumption	maximum 0.9 A (measured for 12VDC)
Battery life	min. 20.000 cycles or max. 2 years
Reading distance	1 to 5 cm - depends on type of RFID chip
Signaling LED lights	green / red / yellow
Case:	plastic, latch made of toughened alloy
Protection class:	IP43
Material of installation doors:	wood / metal / HPL

Supported Media – RFID CARDS

MIFARE Desfire RFID cards are used for initialization and configuration of the lock

ISO14443A
(MIFARE Ultralight, MIFARE Standard, MIFARE Desfire, MIFARE Desfire EV1)

Supported user chips (ISO standard)

ISO14443B
(SR176, SRX512, SRX4k)

ISO15693
(TagIt HF-Plus, ICode SL2 ICS20, EM4035)

Specifications are subject to change without prior notice.

ACCESSORIES

Starter Kit – for installation and initialization of both SI::LOCKER versions (contains manuals, initialization card, management software, encoder, installation guide and drilling template)

Identification media – can be designed as Standard RFID card, RFID wristband, RFID key fob

Information terminal REA::Touch INFO with touch display – to display number of used locker

ENCO – communication reading / writing device with USB interface (encoder)

External RFID readers H-PRO – version with or without numeric keyboard

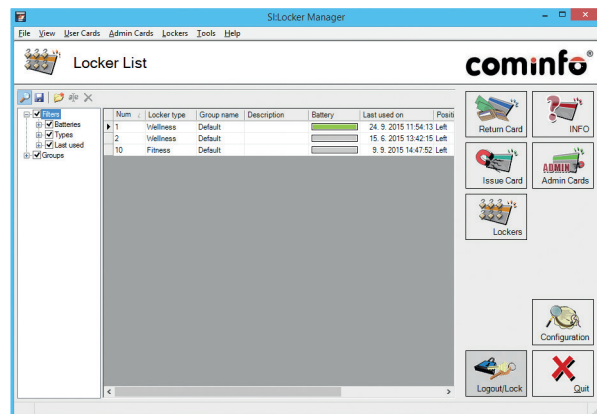
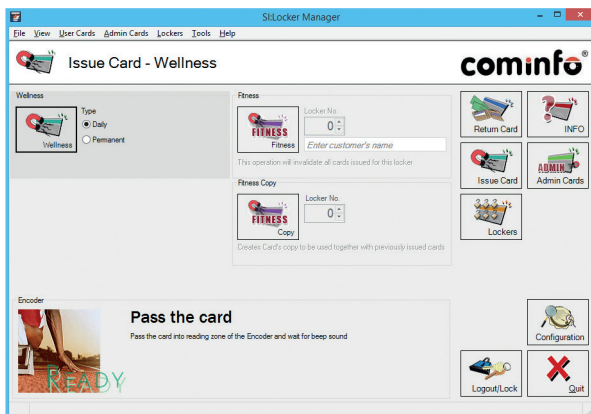
Ticket terminal REA::TICKET – enables integration of different identification technologies as bar-code, RFID card reader

Control terminal REA::MP – ensures on-line and off-line operation of connected devices

External power supply units

Turnstiles and gates – wide range of turnstile and gates by COMINFO for controlled entry / exit

Door Spring needle – for automatic door opening



SI::LOCKER manager sw