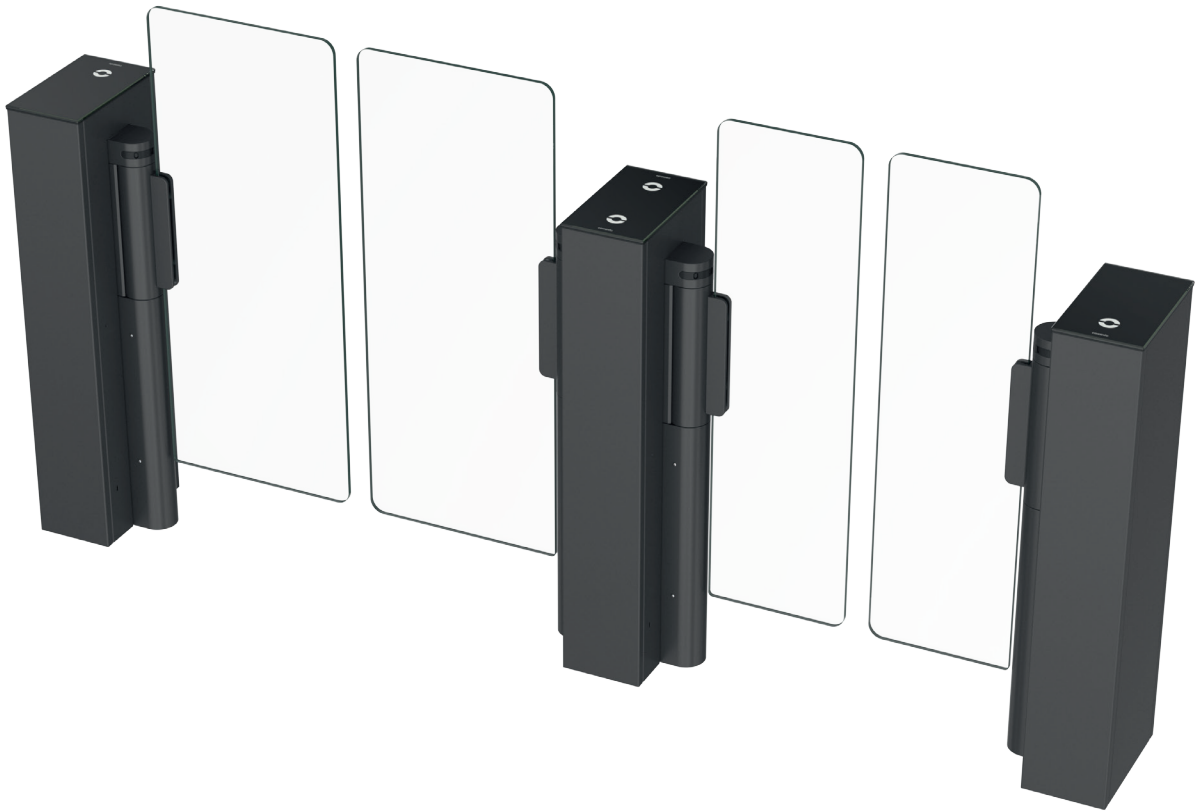


EASYGATE COMPACT

MINIMAL SIZE, MAXIMAL SECURITY



small, sleek & stylish | ultra-compact footprint
advanced entrance control technology

cominfo

By **GUNNEBO** Entrance Control

TECHNICAL SPECIFICATIONS

MATERIAL	Standard	Premium
Casework	brushed stainless steel AISI304	powder-coated finish
Panels	10 mm tempered safety glass	transparent polycarbonate

UTMOST SECURITY

EasyGate Compact speed gates come equipped with COMINFO's own *Sensira Scope* detection system. Smart sensors in a precise array ensure continuous monitoring of the space around the gate.

Sensors detect people approaching, entering, and leaving the lane. They take care of seamless, reliable operation, and accurate people counting.

The system recognises attempts at unauthorised access — tailgating, reverse entry, and dwell-time anomalies.

In maximum protection mode, the gate remains closed if two people attempt to enter simultaneously.

As a further security enhancement, a pressure-sensitive lid can be added. It detects climbing attempts and triggers an immediate alarm.

Premium *Sensira Scopa Ultra* uses a neural-network intelligence for ultra-accurate detection — identifying even close tailgating and sidegating.

USER GUIDANCE

Lights that lead the way. LED panels guide every step with clarity and style. Colours and arrows signal direction, access status, and unusual situations.

Edge Light: Subtle front illumination on the front edges of the cabinet

Access Light: Illumination of the RFID reader



Light guidance indicates the speed gate's status — white for standby, green/red for granted/denied access. At request, navigation can be customised to match the surroundings or showcase brand colours.

RELIABLE PROTECTION AGAINST

× Intrusion	× Tailgating	× Reverse entry
× Lane-Timeout Detection	× Climb-Over Detection (optional)	

SAFETY FEATURES

ENGINEERED FOR PROTECTION

- Safety zone sensing
- EN17352 safety force sensing
- Precise presence sensing
- Fire alarm integration via voltage-free contact for automatic fail-safe response
- Manual opening in case of power outage
- Automatic opening with integrated power backup (optional)

Comprehensive sensing: Integrated sensors at both high and low levels monitor the entire movement zone, instantly activating safety modes when presence is detected.

Certified safety: Door movement complies with EN 17352, ensuring safe operation for every user.

Emergency ready: A voltage-free fire alarm input triggers a fail-safe response.

Power-off protection: In case of power loss, the wings can be manually opened — or, with an optional backup system, open automatically.

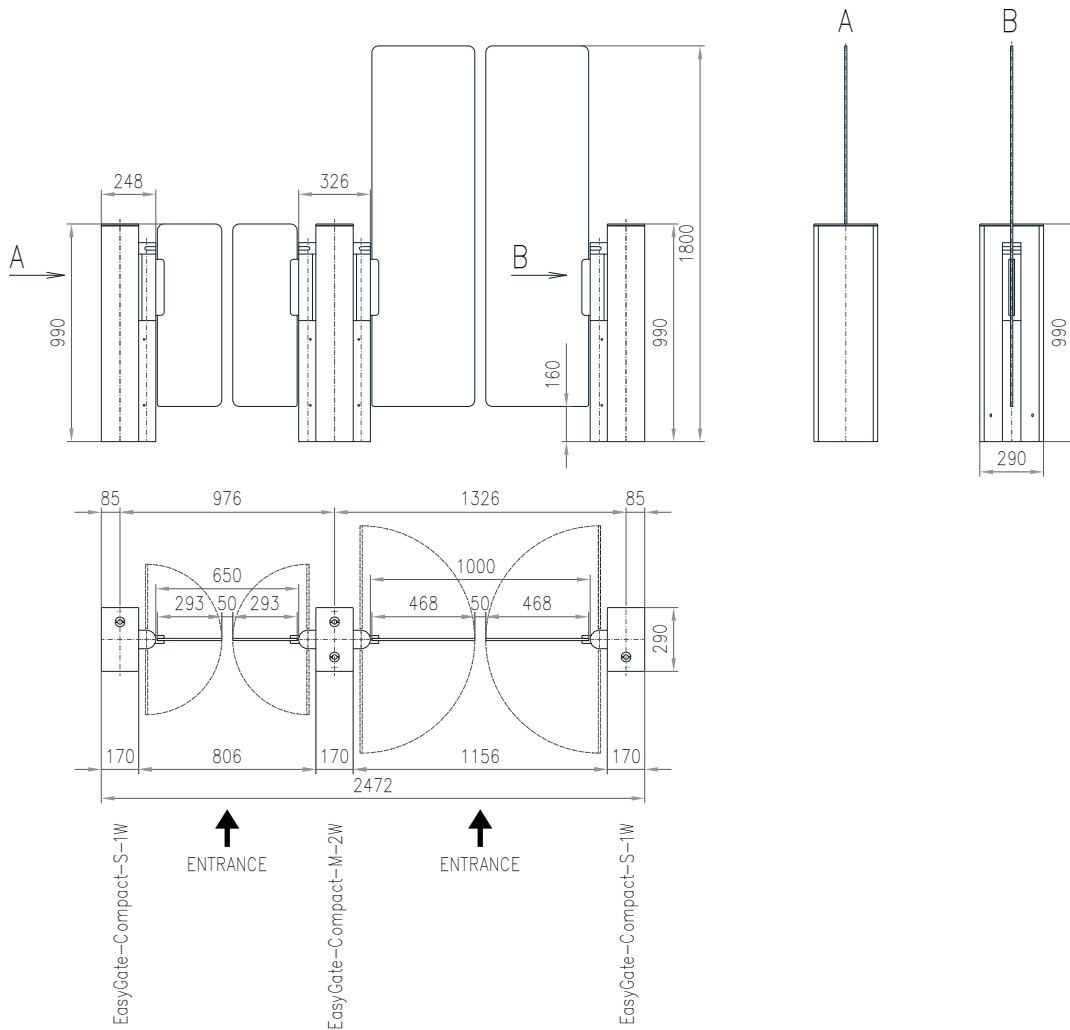
TECHNICAL PARAMETERS

Noise Rating	< 55 dB
Power Supply	115/230 Vac 50/60 Hz
Operating Temperature	0 °C to 50 °C; 95% RH non-condensing

PASSAGE OPTIONS

FLEXIBLE CONFIGURATIONS FOR EVERY SPACE

Passage Width	Regular	650 mm
	Wide	1 000 mm
	Combi version	with centre cabinet that offers more options for passage width
Panel Height	up to 1800 mm	



	GLASS WINGS HEIGHT	PASSAGE WIDTH	CABINET HEIGHT	CABINET LENGTH	CABINET WIDTH
Compact Standard	990 – 1800	650	990	290	170



By GUNNEBO Entrance Control